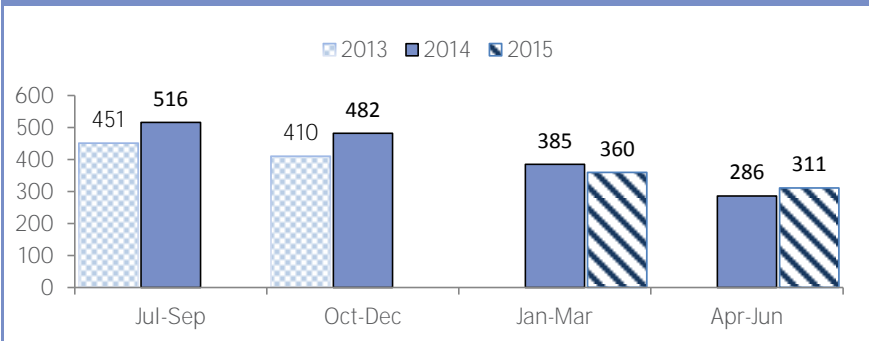


Lehigh County- Quarterly Report 2015

This report reflects call statistics of PA211 East. 39 additional calls were answered by other PA211 regions.
Total call volume = 350

CALL VOLUME



REFERRAL SOURCE

Agency/Organization	140
Prior use	20
Friend/Relative	13
Electronic media	9
Business/Employer	3
Utility Company	3
Flyer/Brochure/Poster	3
Media/TV/Radio	2
Medical services	1
Public officials	1

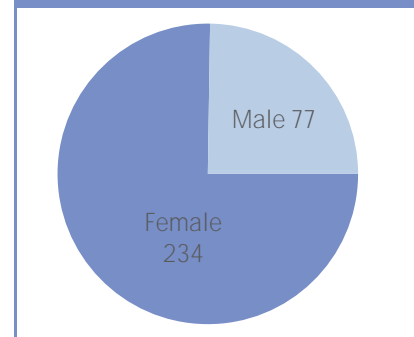
ZIP CODE REPORT

18102	144	18069	3
18103	34	18106	3
18109	24	18032	3
18104	23	18062	3
18101	15	18011	2
18052	14	18034	1
18018	8	18066	1
18036	7	18017	1
18015	7	18105	1
18080	7		
18049	6		
18031	4		

TOP AGENCY REFERRALS

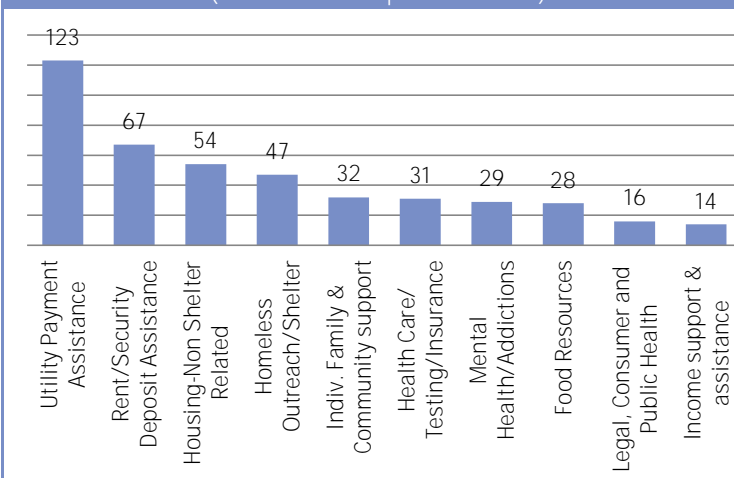
Community Action Committee	64
Salvation Army of Lehigh Valley	62
PA Department of Human Services	59
Casa Guadalupe Center	52
Catholic Charities	44
Hispanic American Organization	41
PA Housing Finance Agency (PHFA)	21
New Bethany Ministries	16
Everlasting Life Ministries	11
PA Public Utility Commission	11
Safe Harbor Easton	10
Lehigh Conference of Churches	10

GENDER REPORT



NEEDS

(Total needs reported = 527)



CALL FREQUENCY

