

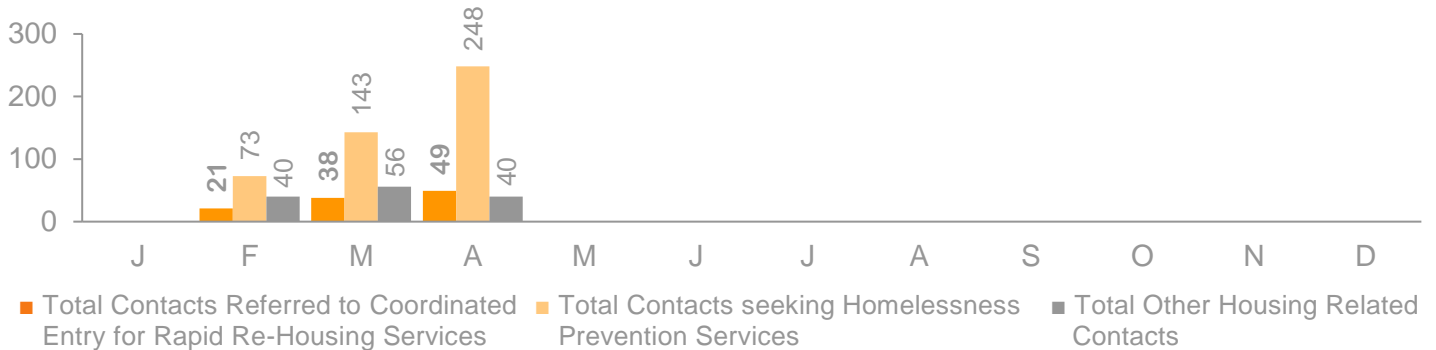
# PENNSYLVANIA 2-1-1 EAST

APRIL 2017  
HOUSING/HOMELESSNESS  
SERVICES REPORT

2-1-1 is a contracted partner for coordinated entry for housing and homelessness services in Lehigh Valley. The following report includes data on the types of housing calls received this month.

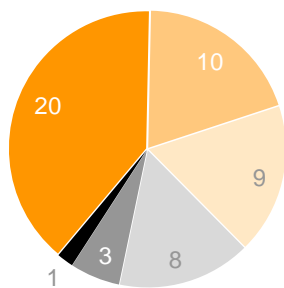
## HOW MANY INQUIRERS CONTACTED 2-1-1?

This month, 2-1-1 received **337** contacts for housing and homelessness related services.



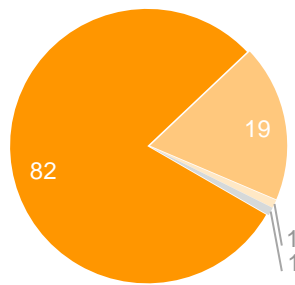
## WHAT HOUSING-RELATED NEEDS\* DO 2-1-1 INQUIRERS HAVE?

Housing Programs/Rentals



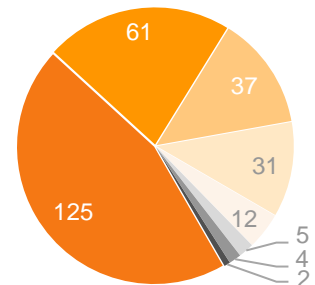
- Home Rental Listings
- Low Income/Subsidized Private Rental Housing
- Single Room Occupancy Housing
- HUD/Public Housing/Section 8
- Older Adult/Disability Related Supportive Housing
- Housing Search Assistance

Homelessness Prevention



- Rental Payment Assistance
- Rental Deposit Assistance
- Homeless Motel Vouchers
- Mortgage Payment Assistance

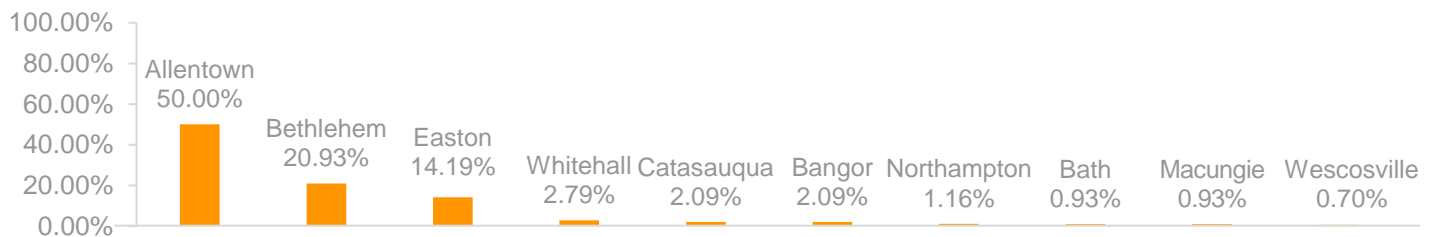
Transitional Housing/Shelters



- Emergency Shelter Clearinghouses
- Community Shelters
- Extreme Cold Weather Shelters
- Transitional Housing/Shelter
- Homeless Drop-In Centers
- Rapid Re-Housing Programs
- Domestic Violence Shelters
- Runaway/Youth Shelters

\*Some inquirers have multiple housing concerns. Captured are the total housing needs requested.

## WHERE ARE 2-1-1 INQUIRERS FROM (TOP 10 AREAS)?

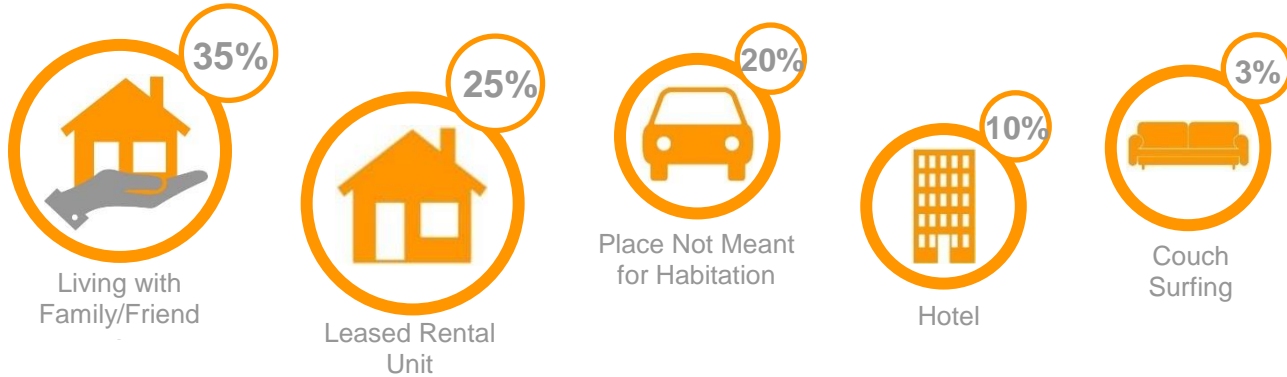


# PENNSYLVANIA 2-1-1 EAST

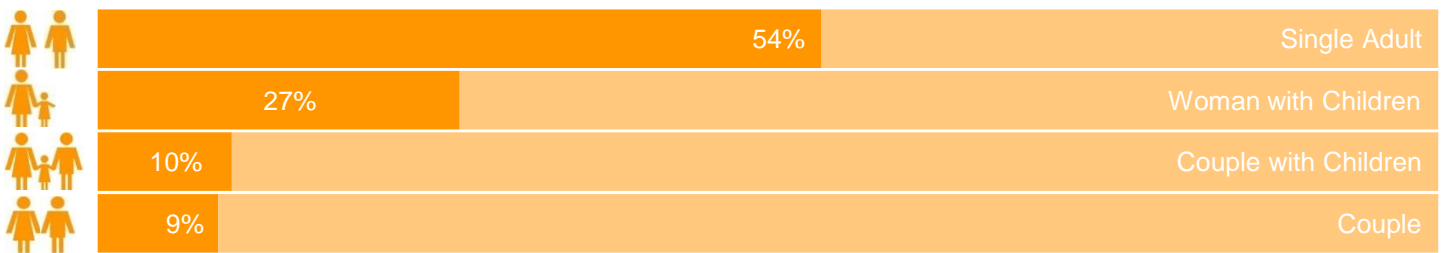
APRIL 2017  
HOUSING/HOMELESSNESS  
SERVICES REPORT

2-1-1 is a contracted partner for coordinated entry for housing and homelessness services in Lehigh Valley. The following report includes data on the types of housing calls received this month.

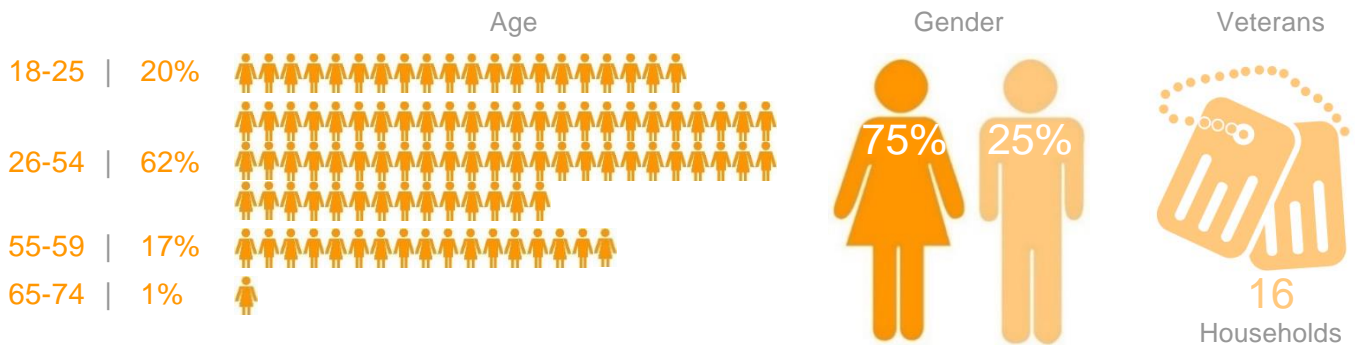
## WHERE ARE INQUIRERS CURRENTLY RESIDING (TOP 5)?



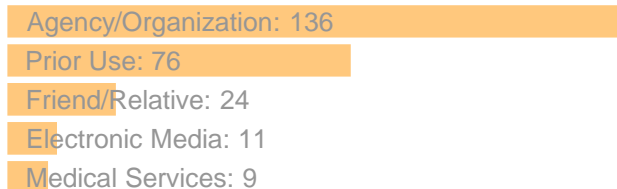
## WHAT IS THE INQUIRER'S HOUSEHOLD COMPOSITION?



## WHO IS CONTACTING 2-1-1?



## TOP REFERRAL SOURCES



## TOP PROGRAM REFERRALS

